

AddressPro[®] System Programming Overview

Plan and layout the lighting layout before programming. Also record all programming information for future use.

Each AddressPro[®] light source is shipped from the factory with a 28 bit unique ID. A remote is used to capture the ID of each light source and assign it to a ZONE.

- ❑ **ZONES:** A number of light sources grouped together for simultaneous control.
- ❑ **SCENE:** SCENEs are recallable pre-set lighting scenarios. In all AddressPro[®] units, the first 4 SCENEs are pre-programmed at the factory for user convenience. AddressPro[®] system can be programmed up to 12 SCENEs.
- ❑ **Fade Time:** This is the transition time to obtain the desired scene. Fade time can be programmed up to 9999 sec.

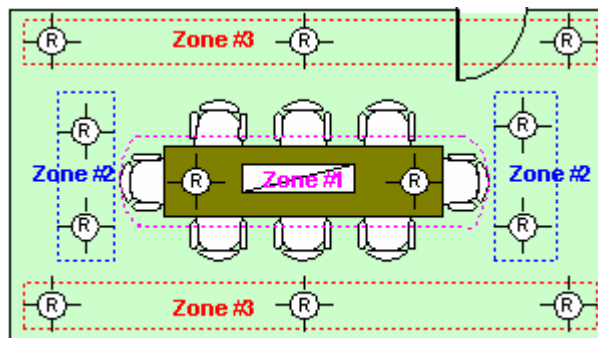


Fig. AddressPro Conference room lighting

Programming Requirements:

1. AddressPro[®] system with at least one digital dimming ballast or module.
2. An AddressPro[®] wall control or ceiling module.
3. Universal Lighting Technologies programming remote control.

Programming Procedure

- ❑ Using an AddressPro[®] handheld remote control, receive the unique ID of the unit to be programmed.
- ❑ Add ZONE information to the received data with the remote control keypads.
- ❑ Send the information to the lighting device through the wall control.
- ❑ Program SCENEs.
- ❑ Program Fade time for SCENEs.
- ❑ Test the system.

Also larger AddressPro[®] Installations can be subdivided into AREAs (12 or fewer ZONEs grouped together for independent control as a segment). More information about this feature please check [AP07 -AREA Function Definition and Applications](#).

For further assistance or ordering information please contact Universal lighting technologies technical support @ 1-800-BALLAST or visit our website at <http://www.universalballast.com>